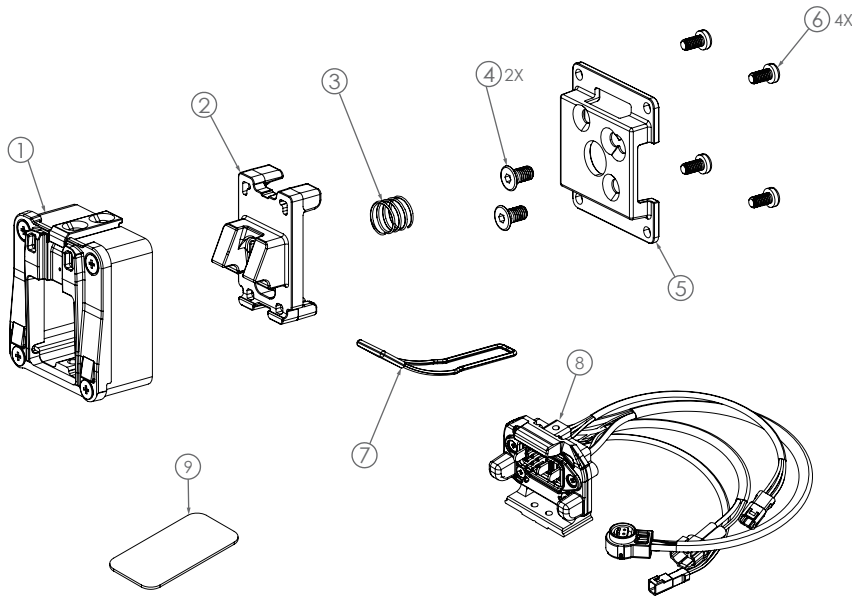


Mount Set

CONTENT



IMPORTANT NOTICE

- Contact the place of purchase or a distributor for information on installation, adjustment, and replacement of the products which are not found in the user's manual. A dealer's manual for professional and experienced bicycle mechanics is available on our website (<https://www.darfonenergy.com/tw/>).

For safety, be sure to read this “user's manual” thoroughly before use, follow it for correct use, and store it so that it can be referenced at any time.

- The following instructions must be observed at all times in order to prevent personal injury and physical damage to equipment and surroundings. The instructions are classified according to the degree of danger or damage which may occur if the product is used incorrectly.

DANGER	Failure to follow the instructions will result in death or serious injury.
WARNING	Failure to follow the instructions could result in death or serious injury.
CAUTION	Failure to follow the instructions could cause personal injury or physical damage to equipment and surroundings.

IMPORTANT SAFETY INFORMATION

CAUTION

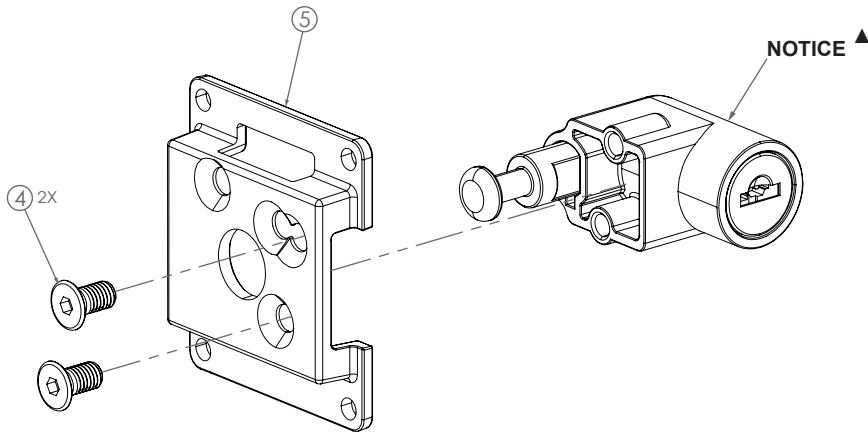
- Do not disassemble or modify the product. This may cause the product to not operate correctly, and you may thus get injured.

NOTICE

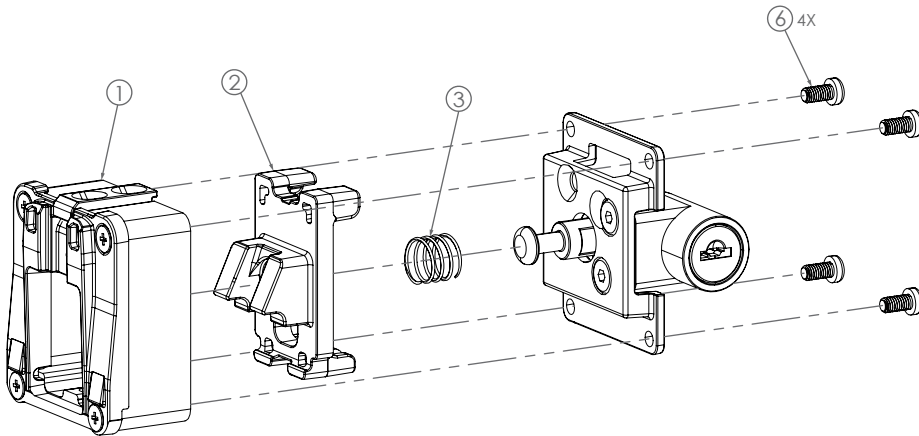
- Please ensure all parts are included without omission before assembly.
 - Please follow the specified torque according to the instruction while screwing the bolts.
 - Please do not pin or excessively bent the cables.
- ▲ This lock will not be included in the mounting set and must be purchased separately.

INSTALL THE MOUNT SET

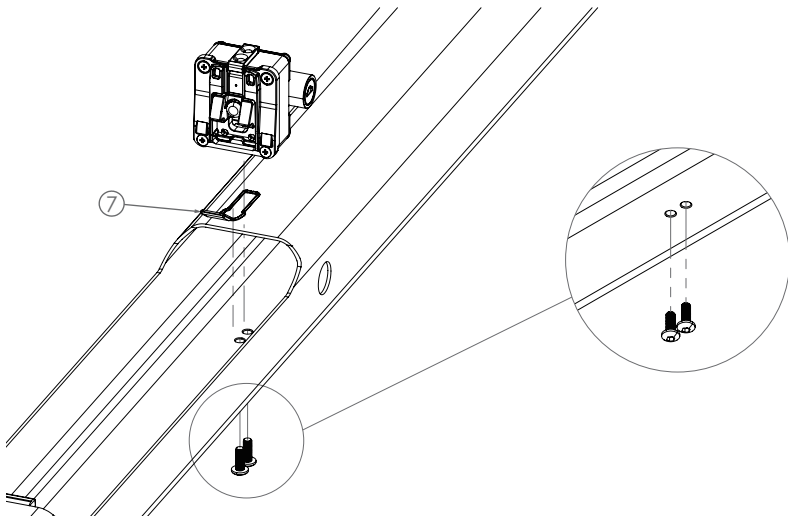
- Insert the lock through ⑤ and secure it tightly with ④.
- ※ The torque is 3N-M



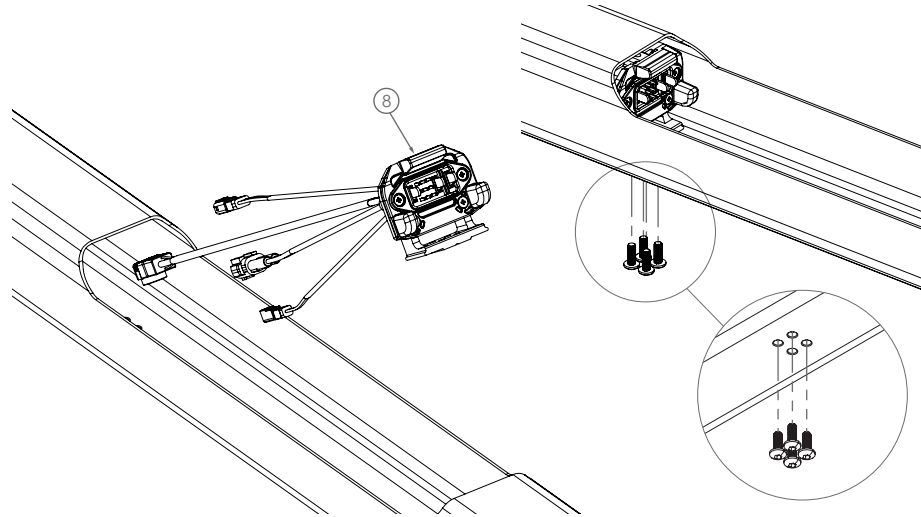
- Install ③, ②, and ① in sequence, then secure them altogether tightly with ⑥.
- ※ The torque is 1.5N-M



- Place ⑦ and install it into the frame with the above composition, then fix altogether with screws.
- ※ The torque is 3N-M

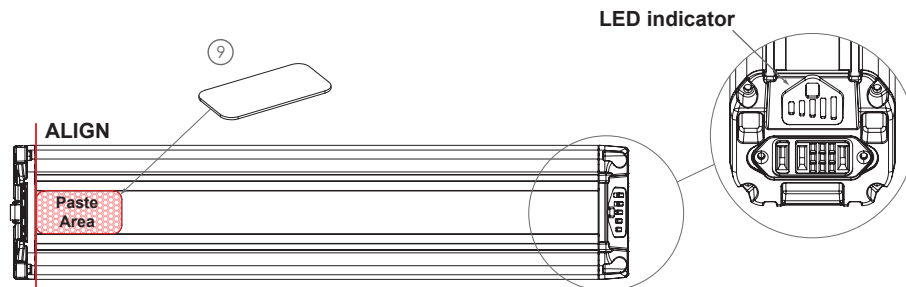


- Install ⑧ into the frame and secure it tightly with screws.
- ※ The torque is 3N-M



INSTALL THE PROTECTIVE PAD

- Face the battery up by ensuring the LED indicator is facing up as in the picture below and attach ⑨ to the opposite end of the LED indicator to protect the battery from wearing.



TROUBLESHOOTING

Details	Causes / possibilities	Remedy
Unable to install / remove the battery.	<ul style="list-style-type: none">• The front and rear mount distance is improper.• Cable routing inside the frame is causing interference.	<ul style="list-style-type: none">• Adjust the mount gap.• Re-organize the cables.
The battery drops off by itself.	The front and rear mount distance is improper.	Adjust the mount gap.
Unable to assembly completely.	The lock is not properly positioned.	Re-adjust the screw position.
Unable to assembly completely.	Parts are missing or damaged.	Contact the place of purchase.

DARFON
DARFON ENERGY TECH



Darfon Energy Technology Corp.
7 F., No. 167-1, Shanying Rd., Guishan Dist., Taoyuan City 333017, Taiwan (R.O.C.)

Darfon Electronics Czech s.r.o.
Cvrcovice 192, 691 23 Cvrcovice. Czech Republic.

Please note: specifications are subject to change for improvement without notice. (English)
© May 2024 by Darfon Energy Technology Corp.

5J.E4C0G.0AC

